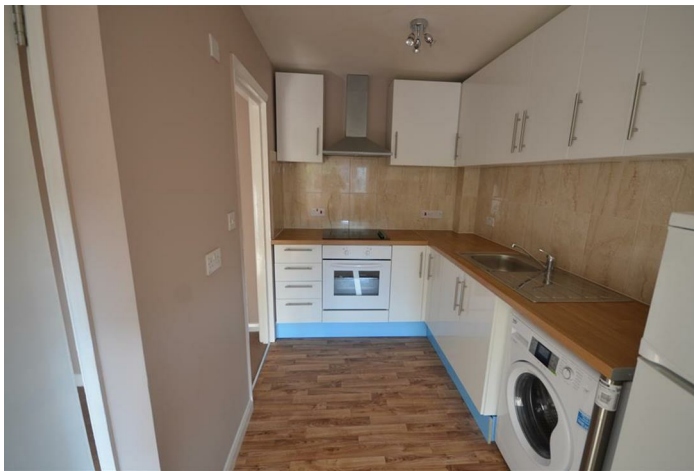


LEASEHOLD - SHARE OF



Flat (EPC Rating: C)

**16 GAINSBOROUGH LODGE, HINDES
ROAD, HARROW, HA1 1SP**
Asking Price

£215,000

1 Bedroom Flat located in Hindes Road

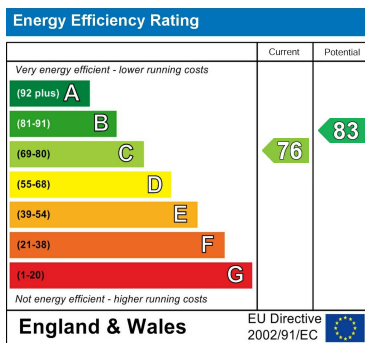
Newly Refurbished one bedroom purpose built flat located between Harrow on the Hill & Harrow Weald Stations. The property comprises of a fitted kitchen, family bathroom, reception room and gas central heating. This property is offered unfurnished and will be suitable for single professional or couple. The property is available NOW. Call us now to arrange an appointment on 0208 904 8822.



Council Tax Band

C

Energy Performance Graph



Call us on

0208 904 8822

info@haymills.uk

Agents Note: Whilst every care has been taken to prepare these particulars, they are for guidance purposes only. All measurements are approximate and are for general guidance purposes only and whilst every care has been taken to ensure their accuracy, they should not be relied upon and potential buyers are advised to recheck the measurements.



HAYMILLS
Expertise Experience Engagement